

# SMALL SIGNAL AMPLIFIER MODEL ; R&K-AA1060-RS

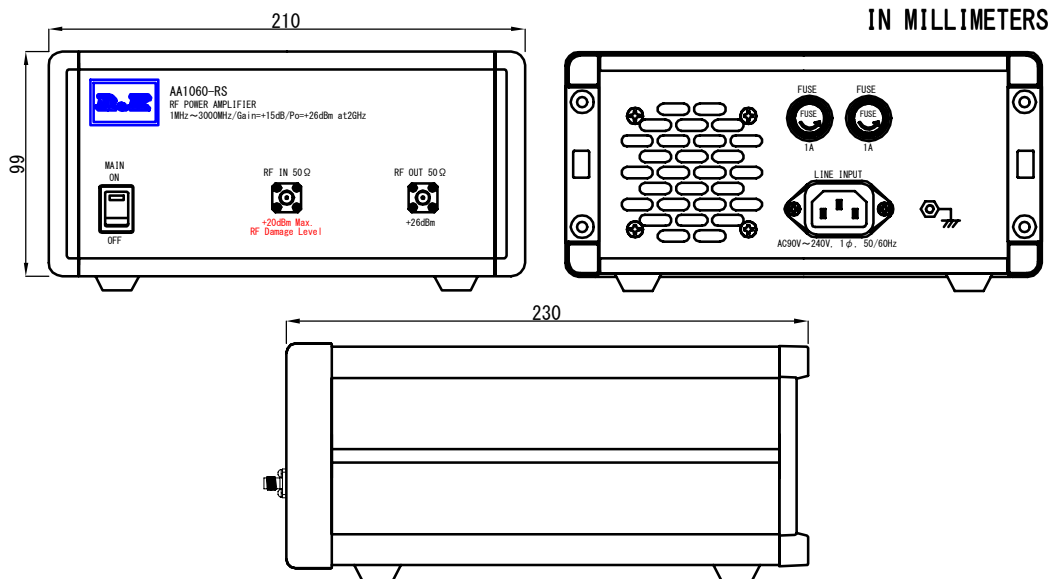
## SPECIFICATIONS

Frequency Range	; 1MHz - 3000MHz
Small Signal Gain	; +18dB (typ.) @2GHz ; +15dB (min.)
Gain Flatness	; ±1.5dB (max.)
Output Power@1dB Comp.	; +26dBm (min.) @2GHz
Output I. C. P.	; +38dBm (typ.) @2GHz
Noise Figure	; 8.0dB (max.)

NOTE: N.F.value is only guaranteed in the range of 10MHz-3000MHz.

Impedance	; 50Ω
Input Return Loss	; 10dB (typ.)
Output Return Loss	; 10dB (typ.)
AC Supply Input	; AC90~240V / 50~60Hz ; 20VA (max.)
Maximum RF Input Power	; +20dBm
Operating Temperature	; -15°C to +45°C
Storage Temperature	; -15°C to +65°C
Connectors (In/Out)	; SMA-FEMALE
Weight	; 3.0kg (max.)

## OUTLINE DRAWING



NOTE ; Specifications subject to change without notice.

<b>R.K</b>		株式会社 アールアンドケー	
三 角 法	縮尺 SCALE	単位 UNIT	作成年月日 DRAWN
		mm inch	2020/1/24
検 認 APPROVED	照 査 CHECKED	設 計 DESIGNED	作 成 DRAWN
Masahiko Suzuki	Masahiko Suzuki	Yoshiikazu Sano	Yoshiikazu Sano

AA1060-RS

SPECIFICATION

EK-20-1417-X-00