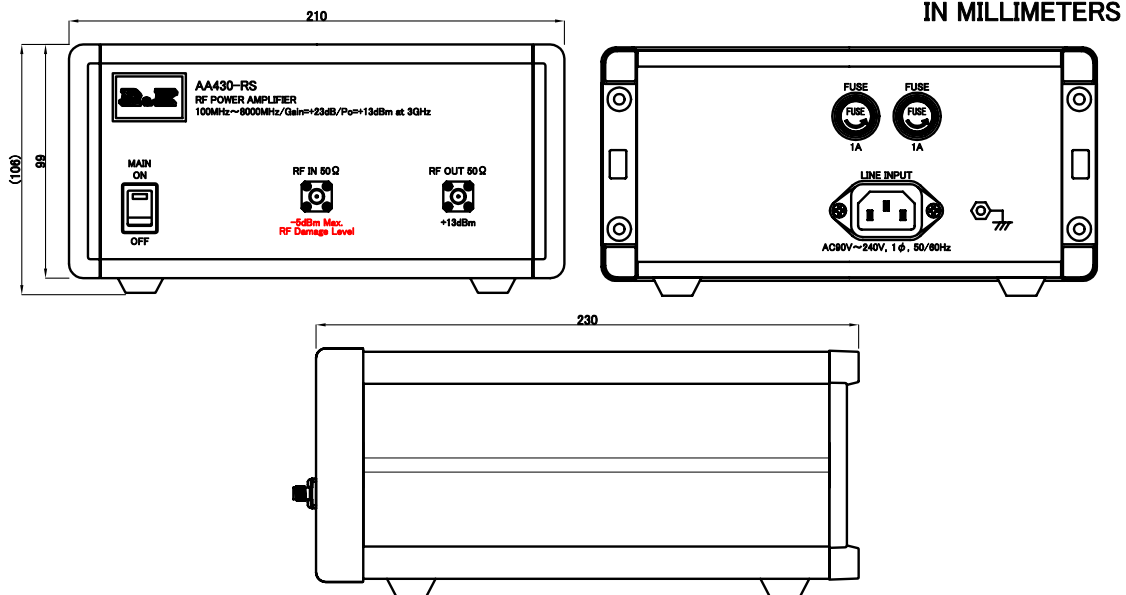


SMALL SIGNAL AMPLIFIER MODEL ; R&K-AA430-RS

SPECIFICATIONS

Frequency Range	; 100 – 8000MHz
Small Signal Gain	; +25dB (typ.) @3GHz ; +23dB (min.)
Gain Flatness	; ±2.5dB (max.)
Output Power@1dB Comp.	; +13dBm (min.) @3GHz
Output I.C.P.	; +24dBm (typ.) @3GHz
Noise Figure	; 10.0dB (max.)
Note: N.F. value is only guaranteed in the range of 100MHz –6700MHz	
Impedance	; 50 Ω
Input VSWR	; 1.3 : 1 (typ.)
Output VSWR	; 1.5 : 1 (typ.)
AC Supply Input	; AC90~240V / 50~60Hz ; 10VA (max.)
Maximum RF Input Power	; -5dBm
Operating Temperature	; -15°C to +45°C
Storage Temperature	; -15°C to +65°C
Connectors (In/Out)	; SMA-FEMALE
Weight	; 3.0kg (max.)

OUTLINE DRAWING



NOTE ; Specifications subject to change without notice.

Revision History

No	Date	Details	Approved
00	2015/11/12	Original Issue	Suzuki
01	2019/06/15	Outline Drawing Changes	Yoshikazu
02	2020/02/03	Outline Drawing Changes	Yoshikazu



株式会社
アールアンドケー

AA430-RS

縮尺 SCALE	単位 UNIT
三角 法	(mm) inch

作成年月日
DRAWN

2015/11/12

SPECIFICATION

検認 APPROVED	照査 CHECKED	設計 DESIGNED	作成 DRAWN
Masahiko Suzuki	Tomotaka	Masahiko Suzuki	Masahiko Suzuki

EK-20-0243-X-02