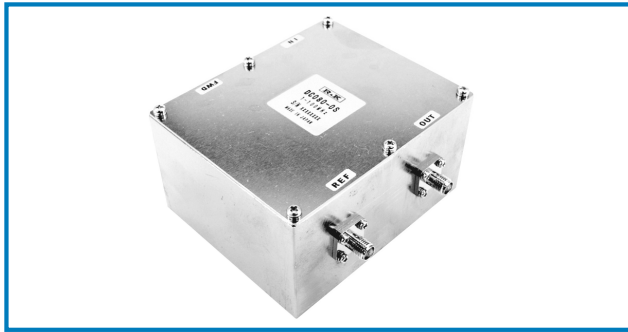


DIRECTIONAL COUPLER

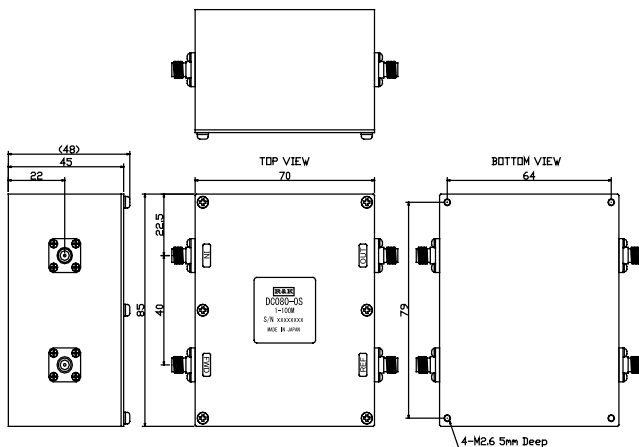


R&K-DC080-0S



OUTLINE DRAWING

※IN MILLIMETERS



- Frequency Range : 1 ~ 100MHz
- High Directivity
- Low Insertion Loss
- High Power
- RoHS Compliance

SPECIFICATIONS

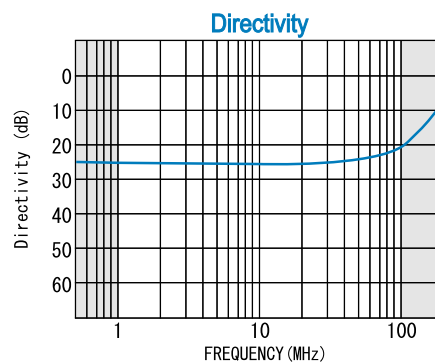
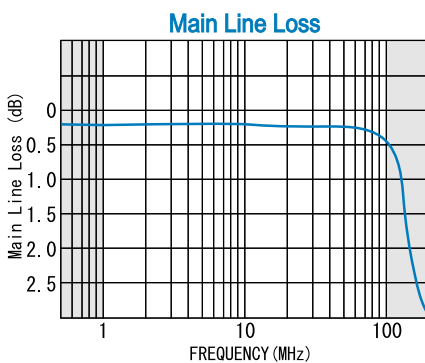
Frequency Range	: 1 - 100MHz
Main Line Loss	: 1.0dB (max.)
Coupling	: 30dB ± 1.5dB
Coupling Flatness	: ± 1.0dB
Directivity	: 18dB (min.)
VSWR (All Ports)	: 1.3:1 (max.)
Impedance	: 50 Ω
Maximum RF Input Power	: 50W
Operating Temperature	: -25°C to +45°C
Storage Temperature	: -45°C to +70°C
Connectors (Standard)	: SMA-FEMALE
Connectors (Option)	: BNC-FEMALE
	: N-FEMALE
Weight	: 470g (typ.)

HOW TO ORDER

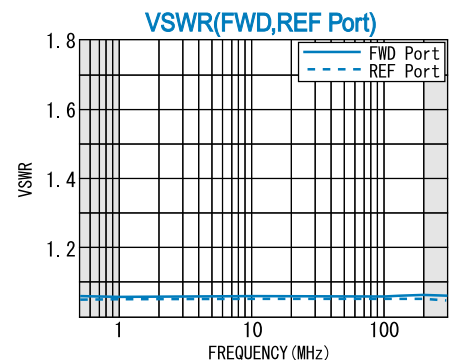
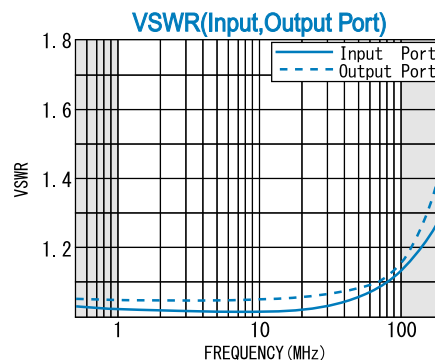
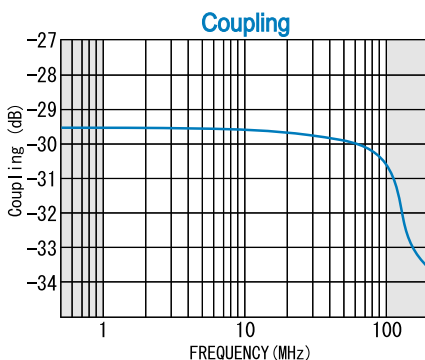
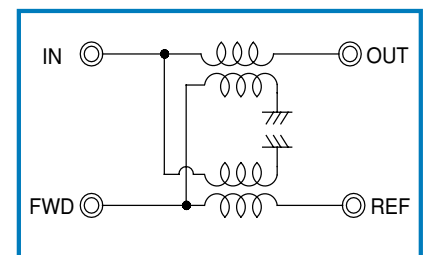
Model Name R&K-DC080-0S

S	= SMA - FEMALE
B	= BNC - FEMALE
N	= N - FEMALE

TYPICAL PERFORMANCE (Temp @+25°C)



SCHEMATIC



R&K reserves the right to make changes in the specifications of or discontinue products at any time without notice. R&K products shall not be used for or in connection with equipment that requires an extremely high level of reliability and safety such as aerospace uses or medical life support equipment. Further, R&K cannot export products to any country for use in military or defense applications.

R&K Company Limited

721-1 Maeda, Fuji-City, Shizuoka-Pref. 416-8577 Japan
 Tel : +81-545-31-2600 E-mail : info@rkco.jp
 Fax : +81-545-31-1600 URL : http://rk-microwave.com