

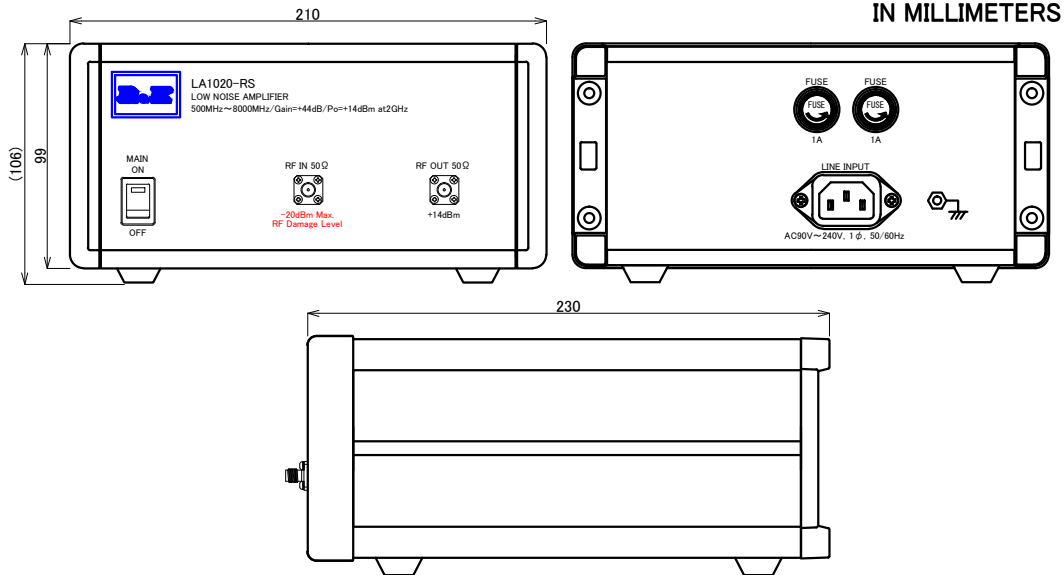
LOW NOISE AMPLIFIER

MODEL ; R&K-LA1020-RS

SPECIFICATIONS

Frequency Range	; 500 – 8000MHz
Small Signal Gain	; +46dB (typ.) @2GHz ; +44dB (min.)
Gain Flatness	; ±2.5dB (max.)
Output Power@1dB Comp.	; +14dBm (min.) @2GHz
Output I.C.P.	; +27dBm (typ.) @2GHz
Noise Figure @+25°C	; 2.5dB (typ.)
-15°C to +45°C	; 3.5dB (max.)
Impedance	; 50 Ω
Input Return Loss	; 10dB (typ.)
Output Return Loss	; 10dB (typ.)
AC Supply Input	; AC90 ~ 240V / 50 ~ 60Hz ; 10VA (max.)
Maximum RF Input Power	; -20dBm
Operating Temperature	; -15°C to +45°C
Storage Temperature	; -15°C to +65°C
Connectors (In/Out)	; SMA-FEMALE
Weight	; 3.0kg (max.)

OUTLINE DRAWING



NOTE ; Specifications subject to change without notice.

Revision History

No	Date	Details	Approved
00	2018/1/24	Original Issue	Tomotaka
01	2019/08/21	Outline Drawing Changes	Yoshikazu
02	2019/11/20	Outline Drawing Changes	Yoshikazu
03	2019/12/4	Spec Revision	Yoshikazu

		株式会社	
		アルアンドケー	
三 角 法	縮尺 SCALE	単位 UNIT	作成年月日 DRAWN
		mm inch	2018/1/24
検認 APPROVED	照査 CHECKED	設計 DESIGNED	作成 DRAWN
Masahiko Suzuki	Masahiko Suzuki	Tomotaka	Tomotaka

LA1020-RS

SPECIFICATION

EK-20-1225-X-03