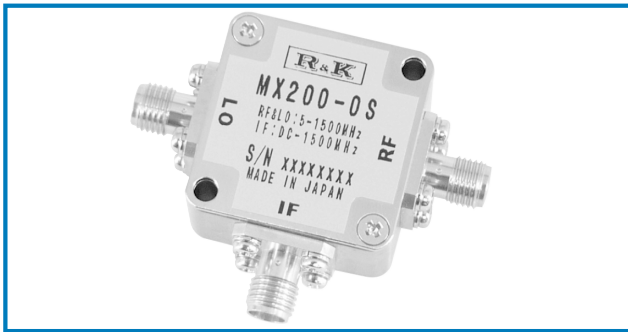


DOUBLE BALANCED MIXER

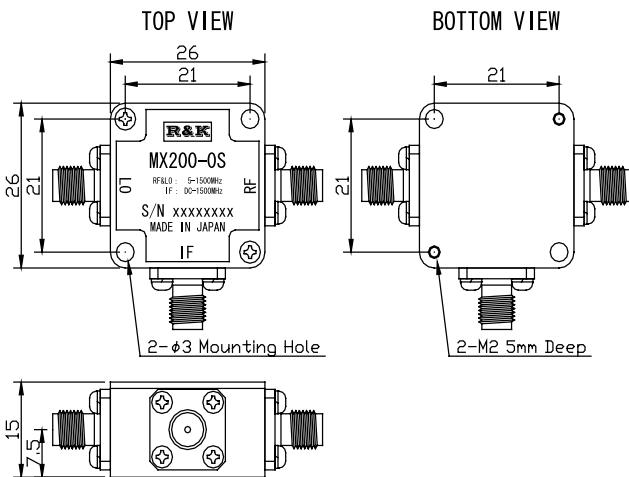


R&K-MX200-0S



OUTLINE DRAWING

※IN MILLIMETERS



- LO&RF Frequency : 5 ~ 1500MHz
- IF Frequency : DC ~ 1500MHz
- Lo Drive Level : +20dBm
- Low Cost
- RoHS Compliance

SPECIFICATIONS

Frequency Range [LO&RF] : 5 - 1500MHz
 [IF] : DC - 1500MHz
 Conversion Loss Max. (LO Drive Level +20dBm)

| | 5 - 50MHz | 50 - 750MHz | 750 - 1500MHz |
|------|-----------|-------------|---------------|
| Typ. | 8.0dB | 7.0dB | 8.0dB |
| Max. | 10.5dB | 8.5dB | 11.0dB |

Isolation (min.)

| | 5 - 50MHz | 50 - 750MHz | 750 - 1500MHz |
|---------|-----------|-------------|---------------|
| LO - RF | 45dB | 30dB | 20dB |
| LO - IF | 40dB | 22dB | 12dB |
| RF - IF | 30dB | 12dB | 8dB |

Input IP3 @Center Band : +30dBm (typ.)
 Input 1dB Comp. Point : +15dBm (typ.)
 Impedance (All Ports) : 50 Ω
 Maximum RF Input Power : 500mW
 Maximum Peak IF Current : 50mA
 Operating Temperature : -40°C to +85°C
 Storage Temperature : -40°C to +100°C
 Connectors (Standard) : SMA-Female
 Connectors (Option) : N-Female
 : BNC-Female

Weight (SMA Connector) : 30g (typ.)

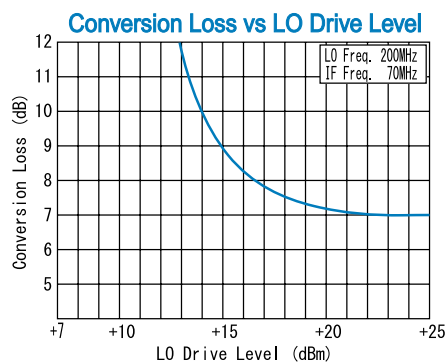
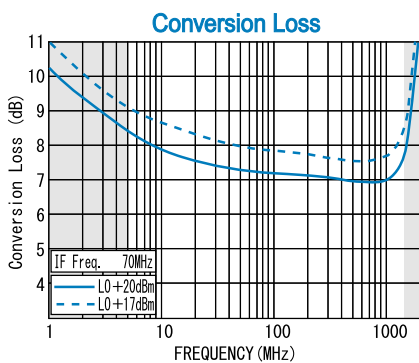
HOW TO ORDER

Model Name R&K-MX200-0S

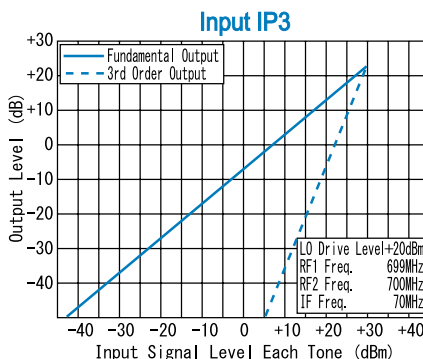
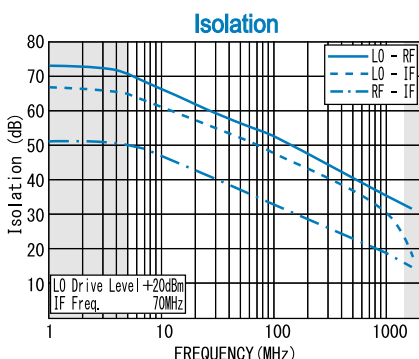
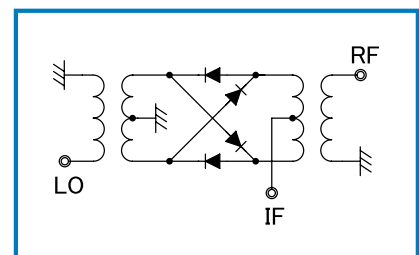
S = SMA - FEMALE
 B = BNC - FEMALE
 N = N - FEMALE

※BNC Operational to 1GHz

TYPICAL PERFORMANCE (Temp @+25°C)



SCHEMATIC



R&K reserves the right to make changes in the specifications of or discontinue products at any time without notice. R&K products shall not be used for or in connection with equipment that requires an extremely high level of reliability and safety such as aerospace uses or medical life support equipment. Further, R&K cannot export products to any country for use in military or defense applications.

R&K Company Limited

721-1 Maeda, Fuji-City, Shizuoka-Pref. 416-8577 Japan
 Tel : +81-545-31-2600 E-mail : info@rk.co.jp
 Fax : +81-545-31-1600 URL : http://rk-microwave.com