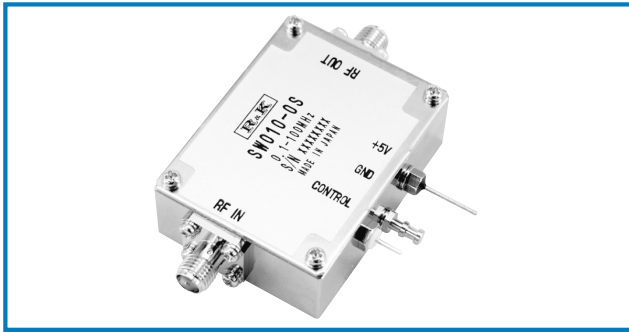


# SOLID STATE SWITCH SPST

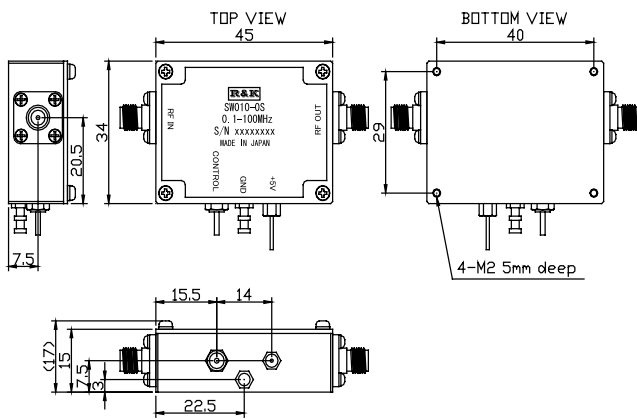


## R&K-SW010-0S



### OUTLINE DRAWING

※IN MILLIMETERS



- Frequency Range : 0.1 ~ 100MHz
- High Switching Speed
- Internal C-MOS Driver
- Reflective
- RoHS Compliance

### SPECIFICATIONS

Frequency Range	: 0.1 - 100MHz
Insertion Loss	: 4.0dB (max.)
Isolation	: 40dB (min.)
Impedance	: 50 Ω
VSWR (All Port)	: 1.25:1 (typ.)
Input Power 1dB Comp. Point	: + 7dBm (typ.)@100MHz
Input I.C.P.	: +14dBm (typ.)@100MHz
Switching Speed	: 50ns (max.) tRise / tFall
Switching Control	

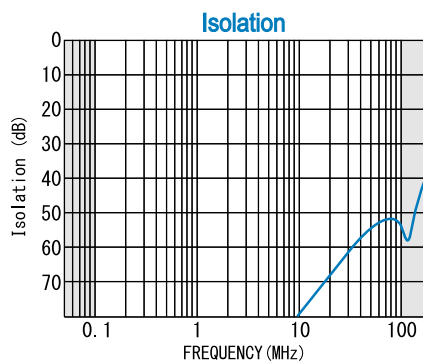
Control Input	RF Output
H	ON
L	OFF

- H=C-MOS H or Open / L=C-MOS L or GND
- Maximum RF Input Power : +12dBm
- DC Supply Input : +5V 20mA (max.)
- Operating Temperature : -25°C to +85°C
- Storage Temperature : -25°C to +85°C
- Connectors (Standard) : SMA-Female
- Connectors (Option) : BNC-Female
- Weight (SMA Connector) : 55g (typ.)

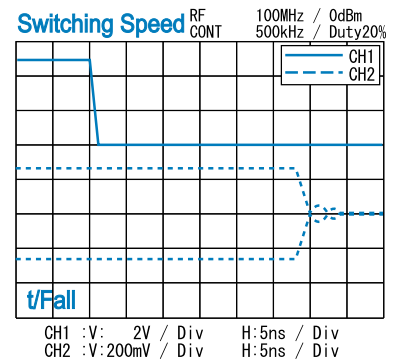
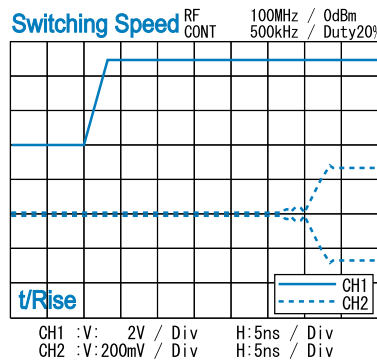
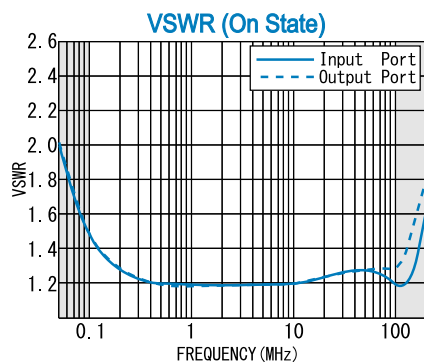
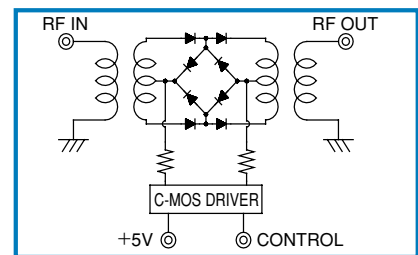
### HOW TO ORDER

Model Name R&K-SW010-0S S = SMA - FEMALE  
B = BNC - FEMALE

### TYPICAL PERFORMANCE (Temp @+25°C)



### SCHEMATIC



R&K reserves the right to make changes in the specifications of or discontinue products at any time without notice. R&K products shall not be used for or in connection with equipment that requires an extremely high level of reliability and safety such as aerospace uses or medical life support equipment. Further, R&K cannot export products to any country for use in military or defense applications.

## R&K Company Limited

721-1 Maeda, Fuji-City, Shizuoka-Pref. 416-8577 Japan  
 Tel : +81-545-31-2600 E-mail : info@rk.co.jp  
 Fax : +81-545-31-1600 URL : http://rk-microwave.com