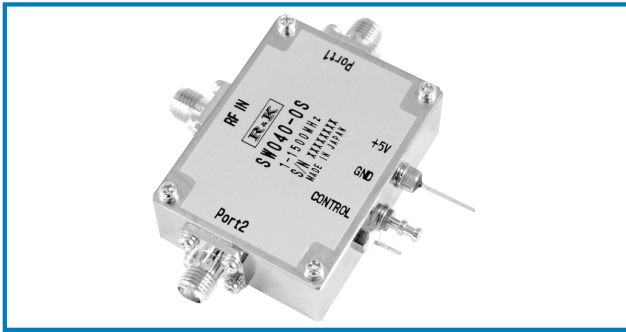


# PIN DIODE SWITCH SPDT

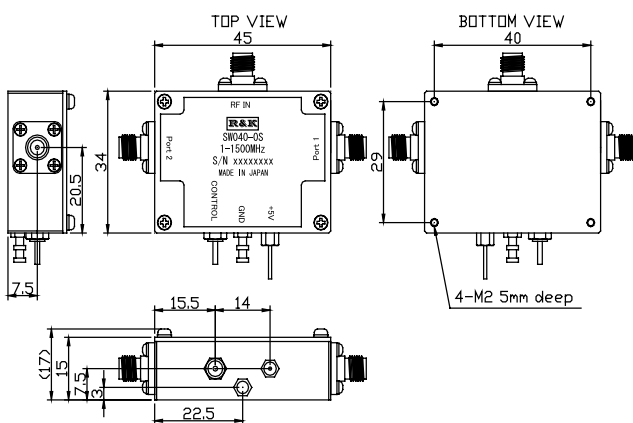


## R&K-SW040-0S



### OUTLINE DRAWING

※ IN MILLIMETERS



- Frequency Range : 1 ~ 1500MHz
- High Switching Speed
- Internal C-MOS Driver
- Reflective
- RoHS Compliance

### SPECIFICATIONS

Frequency Range	: 1 - 1500MHz
Insertion Loss	: 3.0dB (max.)
Isolation	: 35dB (min.)
Impedance	: 50Ω
VSWR (RF IN)	: 1.6:1 (typ.)
(Port1/Port2)	: 1.4:1 (typ.)
Input Power 1dB Comp. Point	: +33dBm (typ.) @1.5GHz
Input I.C.P.	: +41dBm (typ.) @1.5GHz
Switching Speed	: 6 μs (max.) tRise / tFall
Switching Control	

Control Input	RF Output
H	Port1
L	Port2

- H=C-MOS H or Open / L=C-MOS L or GND
- Maximum RF Input Power : +30dBm
- DC Supply Input : +5V 20mA (max.)
- Operating Temperature : -25°C to +85°C
- Storage Temperature : -25°C to +85°C
- Connectors (Standard) : SMA-Female
- Connectors (Option) : BNC-Female
- Weight (SMA Connector) : 60g (typ.)

### HOW TO ORDER

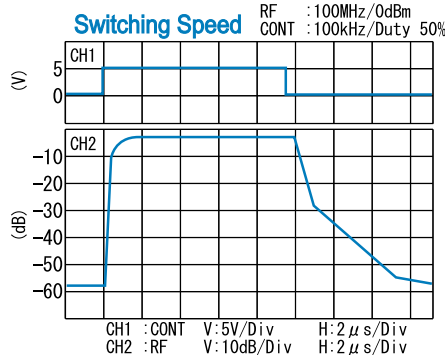
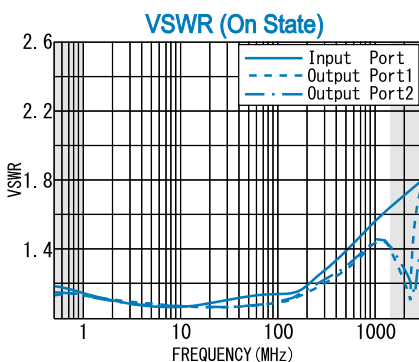
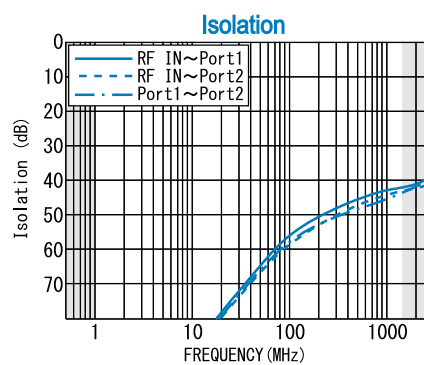
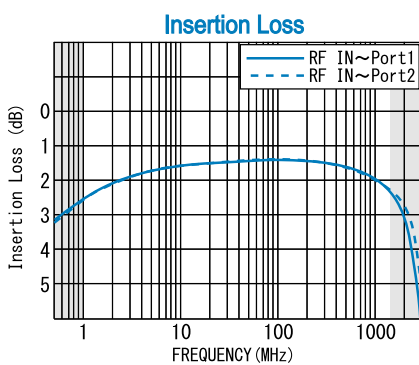
Model Name R&K-SW040-0S



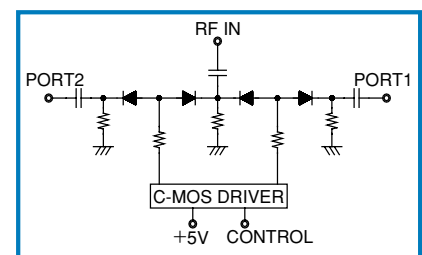
S = SMA - FEMALE  
B = BNC - FEMALE

※BNC Operational to 1GHz

### TYPICAL PERFORMANCE (Temp @+25°C)



### SCHEMATIC



R&K reserves the right to make changes in the specifications of or discontinue products at any time without notice. R&K products shall not be used for or in connection with equipment that requires an extremely high level of reliability and safety such as aerospace uses or medical life support equipment. Further, R&K cannot export products to any country for use in military or defense applications.

## R&K Company Limited

721-1 Maeda, Fuji-City, Shizuoka-Pref. 416-8577 Japan  
Tel: +81-545-31-2600 E-mail: info@rkco.jp  
Fax: +81-545-31-1600 URL: http://rk-microwave.com