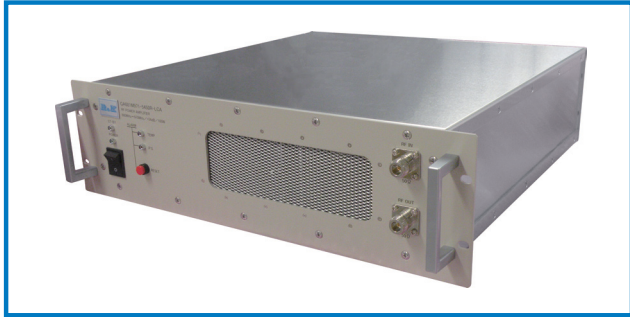


# RF POWER AMPLIFIER

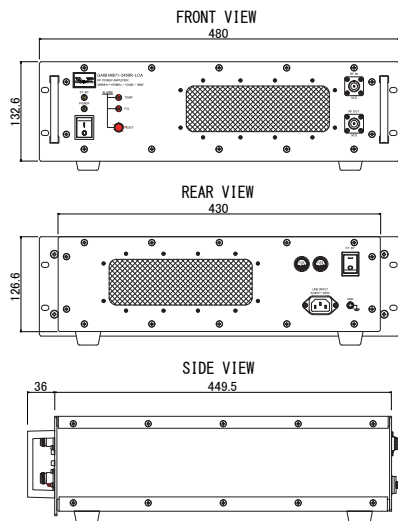


## R&K-GA681M971-5450R-LCA

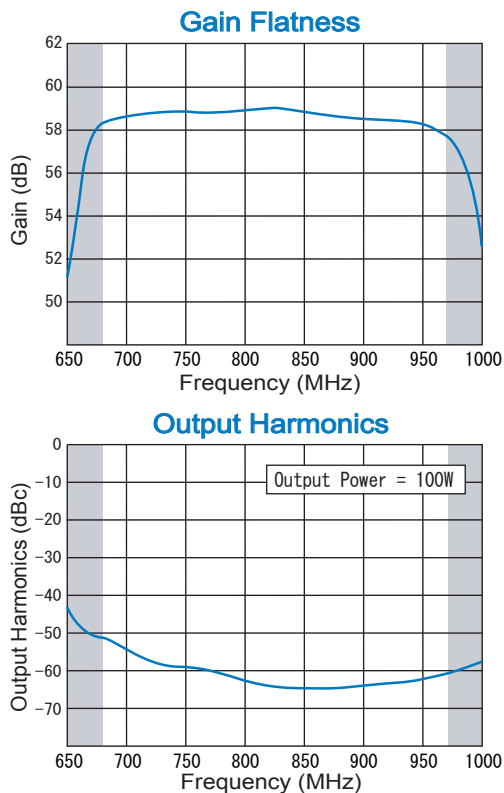


### OUTLINE DRAWING

※IN MILLIMETERS



### TYPICAL PERFORMANCE (Temp. @+25°C)



- Frequency Range : 680MHz~970MHz
- Output Power : 100W(min.) @P<sub>sat</sub>.
- Low Cost

### APPLICATION

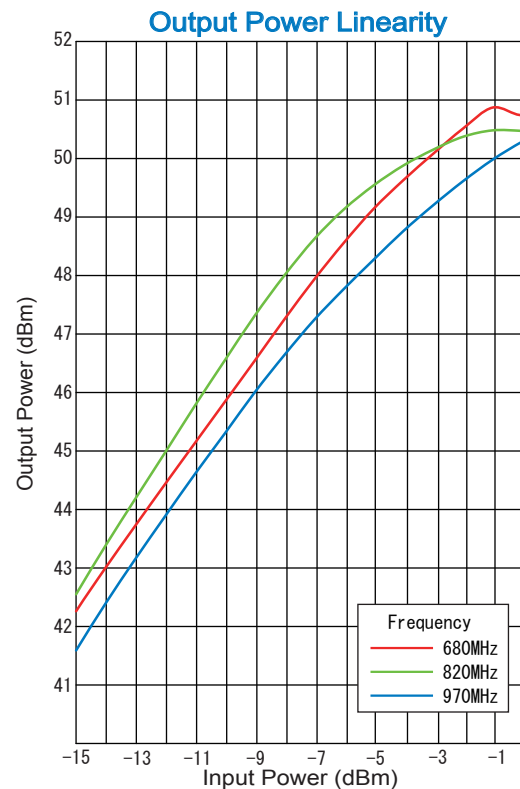
- Telecommunication Test and Measurement Application
- Etc...

### SPECIFICATIONS @ +25°C

Frequency Range	: 680MHz ~ 970MHz
Small Signal Gain	: +54.0dB (min.)
Gain Flatness	: ±1.5dB (max.)
Output Power	: 100W (min.) @P <sub>sat</sub> .
Operation Mode	: Class AB
Output I.C.P.	: +51.0dBm (typ.)
Harmonics	: -30.0dBc (max.) @P <sub>o</sub> =100W
Spurious	: -60.0dBc (max.) @P <sub>o</sub> =100W
Impedance	: 50Ω
Input VSWR	: 1.5 (max.)
Output VSWR	: 1.5 (max.)
Maximum RF Input Power	: +2.0dBm
AC Supply Input	: AC85V~AC250V/1φ, 50/60Hz, 400VA
Operating Temperature	: 0°C to +40°C
Storage Temperature	: -15°C to +65°C
Connectors	: RF - IN N - FEMALE RF - OUT N - FEMALE
Size	: (W)480mm×(D)449.5mm×(H)132.6mm
Weight	: 20.0kg (max.)
Cooling	: Forced Air Cooling
Protection Circuits	: Over Temperature Protection Power Supply Voltage Protection
Other	: With Output Circulator

### HOW TO ORDER

Model Number  
R&K-GA681M971-5450R-LCA      No Option



R&K reserves the right to make changes in the specifications of or discontinue products at any time without notice. R&K products shall not be used for or in connection with equipment that requires an extremely high level of reliability and safety such as aerospace uses or medical life support equipment. Further, R&K cannot export products to any country for use in military or defense applications.

## R&K Company Limited

721-1 Maeda, Fuji-City, Shizuoka-Pref. 416-8577 Japan  
Tel: +81-545-31-2600 E-mail: info@rkco.jp  
Fax: +81-545-31-1600 URL: http://rk-microwave.com