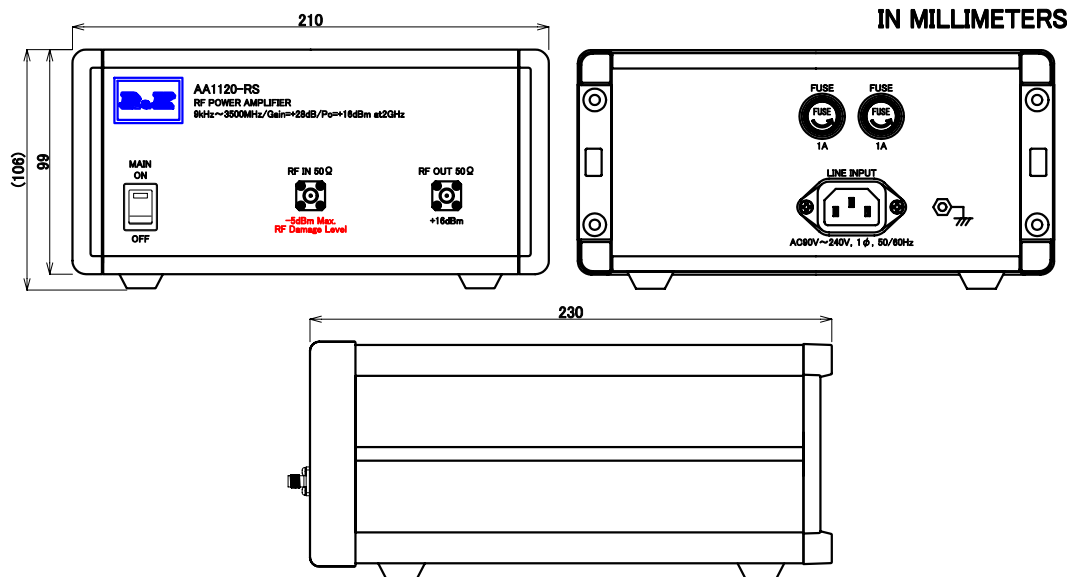


# SMALL SIGNAL AMPLIFIER MODEL : R&K-AA1120-RS

## SPECIFICATIONS

Frequency Range	: 9kHz – 3500MHz
Small Signal Gain	: +31dB (typ.) @2GHz : +28dB (min.)
Gain Flatness	: ±2.0dB (max.)
Output Power@1dB Comp.	: +16dBm (min.) @2GHz
Output I.C.P.	: +30dBm (typ.) @2GHz
Noise Figure	: 6.5dB (max.)
NOTE: N.F.value is only guaranteed in the range of 10MHz~3500MHz.	
Impedance	: 50 Ω
Input Return Loss	: -18dB(typ.)
Output Return Loss	: -13dB(typ.)
AC Supply Input	: AC90~240V / 50~60Hz : 20VA (max.)
Maximum RF Input Power	: -5dBm
Operating Temperature	: -15°C to +45°C
Storage Temperature	: -15°C to +65°C
Connectors (In/Out)	: SMA-FEMALE
Weight	: 3.0kg (max.)

## OUTLINE DRAWING



NOTE : Specifications subject to change without notice.

<b>R.K</b>		株式会社 アールアンドケー	
縮尺 SCALE	単位 UNIT	作成年月日 DRAWN	
三角法	mm inch	2020/7/6	
検認 APPROVED	照査 CHECKED	設計 DESIGNED	作成 DRAWN
Masahiko Suzuki	Masahiko Suzuki	Yoshikazu Sano	Yoshikazu Sano

AA1120-RS

SPECIFICATION

EK-20-1436-X-00