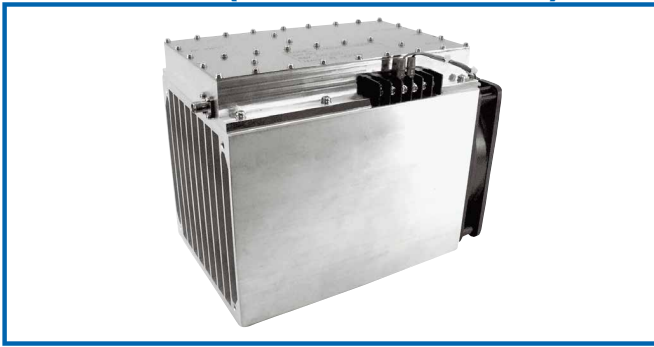


POWER AMPLIFIER

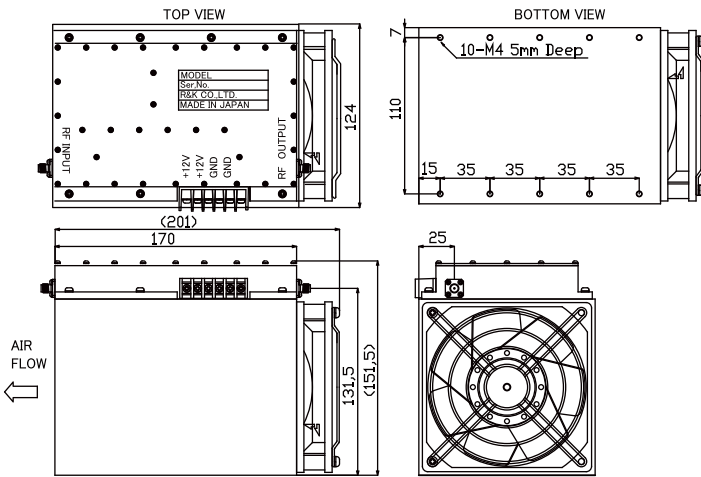


R&K-ALM2527-3943C-SMA (With Circulator)



OUTLINE DRAWING

※ IN MILLIMETERS



- Broadband Frequency: 2500 ~ 2700MHz
- Output Power : +43dBm
- Gain Flatness : ±1.0dB (typ.)
- With Output Circulator (For full power Protection)

SPECIFICATIONS

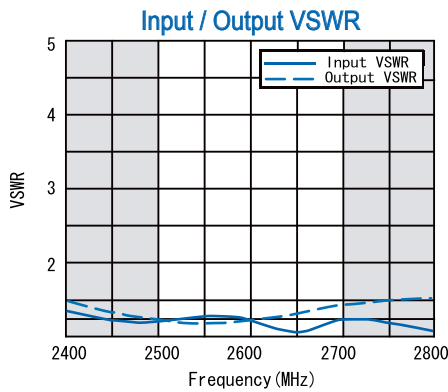
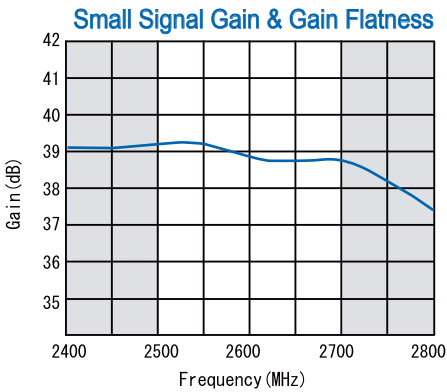
Frequency Range	: 2500~2700MHz
Small Signal Gain	: +39dB (typ.) : +38dB (min.)
Gain Flatness	: ±1.0dB (typ.)
Output Power@1dB Comp.	: +40dBm (min.)
Output I.C.P.	: +53dBm (typ.) @2600MHz
Noise Figure	: 11dB (max.)
Impedance	: 50 Ω
Input VSWR	: 1.5 : 1 (typ.)
Output VSWR	: 1.5 : 1 (typ.)
DC Supply Input	: +12V ±0.5V : 9A (max.)
Maximum RF Input Power	: +7dBm
Operating Temperature	: -10°C to +45°C
Storage Temperature	: -15°C to +65°C
Connectors	: SMA-FEMALE
Weight	: 3kg (typ.)

Forced Air Cooling Required

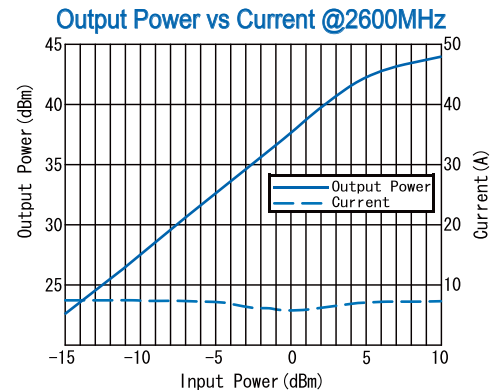
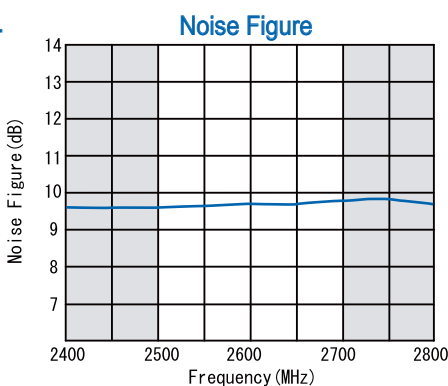
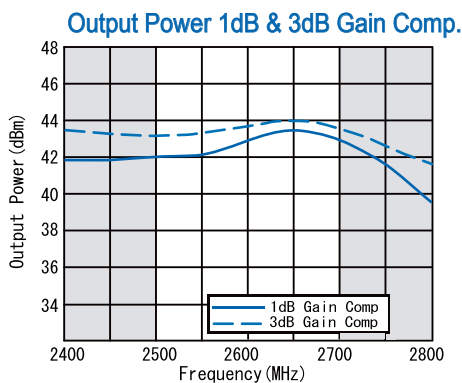
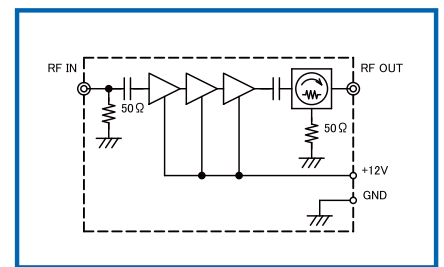
HOW TO ORDER

Model Name
R&K-ALM2527-3943C-SMA No Option

TYPICAL PERFORMANCE (Temp @+25°C)



SCHEMATIC



R&K reserves the right to make changes in the specifications of or discontinue products at any time without notice. R&K products shall not be used for or in connection with equipment that requires an extremely high level of reliability and safety such as aerospace uses or medical life support equipment. Further, the export of R&K products from Japan may be subject to an export license by the government of Japan, based on Japan's "Foreign Exchange and Foreign Trade Law".

R&K Company Limited

721-1 Maeda, Fuji-City, Shizuoka-Pref. 416-8577 Japan
Tel : +81-545-31-2600 E-mail : info@rkco.jp
Fax : +81-545-31-1600 URL : http://rk-microwave.com