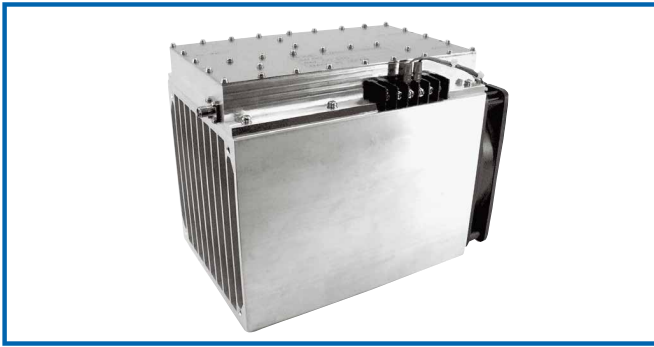


POWER AMPLIFIER

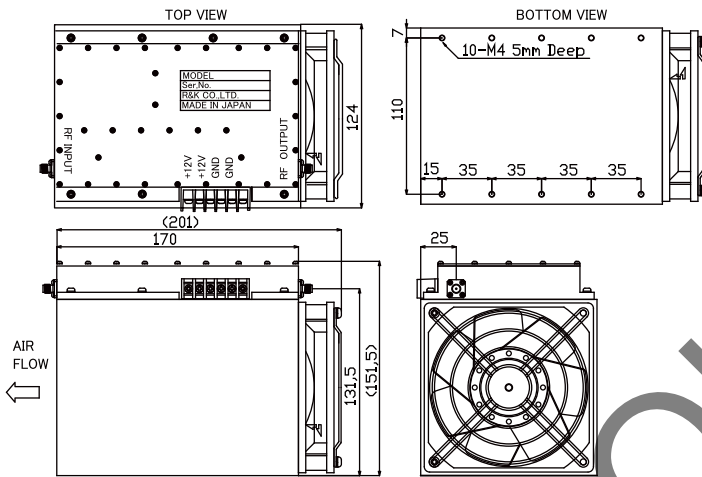


R&K-ALM2527-4547-SMA



OUTLINE DRAWING

※ IN MILLIMETERS



- Broadband Frequency: 2500 ~ 2700MHz
- Output Power : +47dBm
- Gain Flatness : ±1.0dB (typ.)
- Without Output circulator

SPECIFICATIONS

Frequency Range	: 2500~2700MHz
Small Signal Gain	: +46dB (typ.) : +44dB (min.)
Gain Flatness	: ±1.0dB (typ.)
Output Power@1dB Comp.	: +46dBm (min.)
Output I.C.P.	: +56dBm (typ.) @2600MHz
Noise Figure	: 11dB (max.)
Impedance	: 50Ω
Input VSWR	: 1.5 : 1 (typ.)
Output VSWR	: 2.5 : 1 (typ.)
DC Supply Input	: +12V ±0.5V : 20A (max.)
Maximum RF Input Power	: +3dBm
Operating Temperature	: - 10°C to + 45°C
Storage Temperature	: - 15°C to + 65°C
Connectors	: SMA-FEMALE
Weight	: 3kg (typ.)

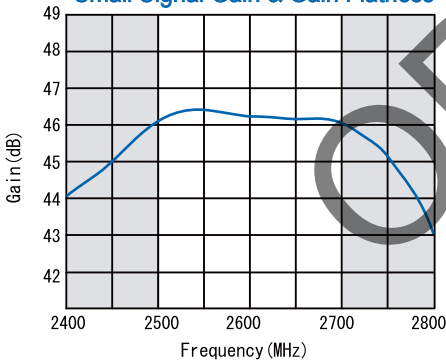
Forced Air Cooling Required

HOW TO ORDER

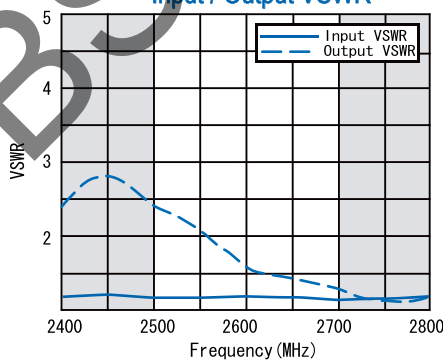
Model Name
R&K-ALM2527-4547-SMA No Option

TYPICAL PERFORMANCE (Temp @+25°C)

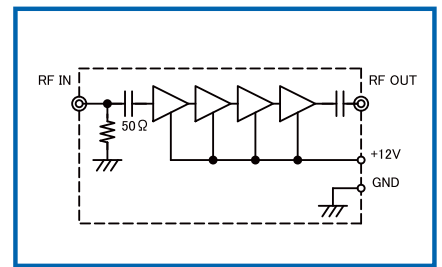
Small Signal Gain & Gain Flatness



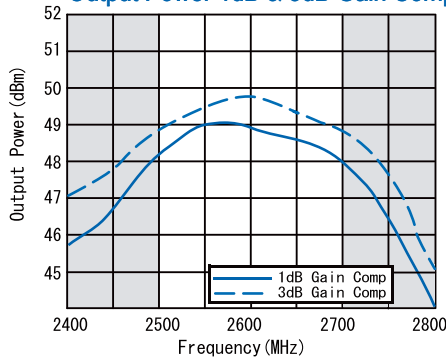
Input / Output VSWR



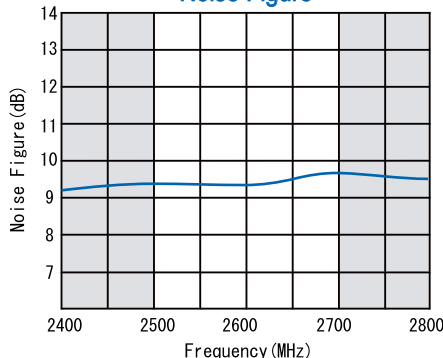
SCHEMATIC



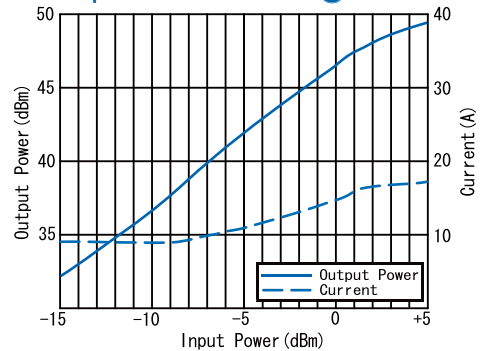
Output Power 1dB & 3dB Gain Comp.



Noise Figure



Output Power vs Current @2600MHz



R&K reserves the right to make changes in the specifications of or discontinue products at any time without notice. R&K products shall not be used for or in connection with equipment that requires an extremely high level of reliability and safety such as aerospace uses or medical life support equipment. Further, the export of R&K products from Japan may be subject to an export license by the government of Japan, based on Japan's "Foreign Exchange and Foreign Trade Law".

R&K Company Limited

721-1 Maeda, Fuji-City, Shizuoka-Pref. 416-8577 Japan
Tel : +81-545-31-2600 E-mail : info@rkco.jp
Fax : +81-545-31-1600 URL : http://rk-microwave.com