

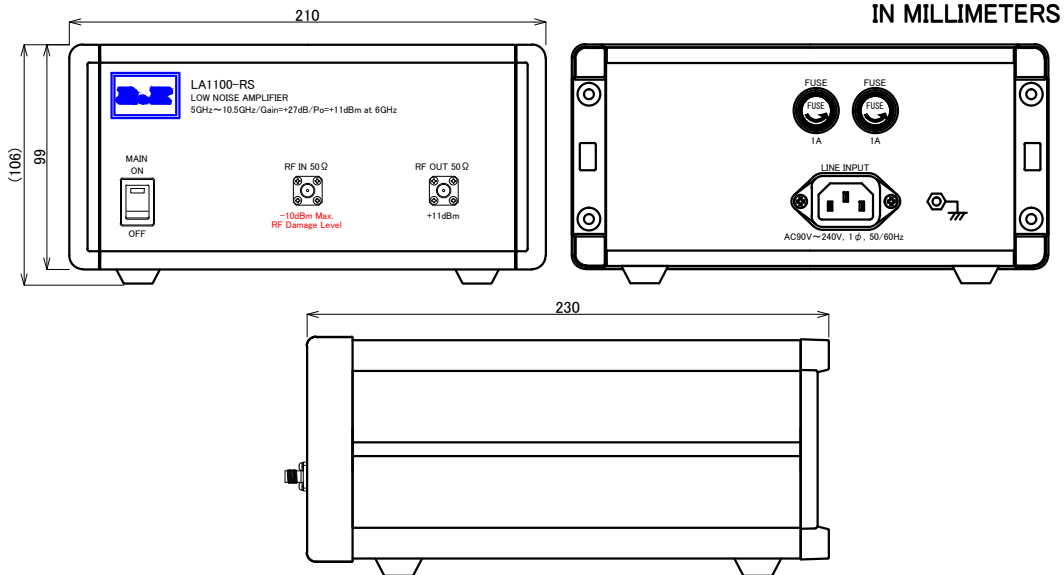
LOW NOISE AMPLIFIER

MODEL ; R&K-LA1100-RS

SPECIFICATIONS

Frequency Range	; 5GHz~10.5GHz
Small Signal Gain	; +30dB (typ.) @6GHz ; +27dB (min.)
Gain Flatness	; ±2.2dB (max.)
Output Power@1dB Comp.	; +11dBm (min.) @6GHz
Output I.C.P.	; +23dBm (typ.) @6GHz
Noise Figure @+25°C	; 2.7dB (typ.)
-15°C to +45°C	; 3.7dB (max.)
Impedance	; 50Ω
Input Return Loss	; 10dB (typ.)
Output Return Loss	; 10dB (typ.)
AC Supply Input	; AC90~240V / 50~60Hz ; 10VA (max.)
Maximum RF Input Power	; -10dBm
Operating Temperature	; -15°C to +45°C
Storage Temperature	; -15°C to +65°C
Connectors (In/Out)	; SMA-FEMALE
Weight	; 3.0kg (max.)

OUTLINE DRAWING



NOTE ; Specifications subject to change without notice.

Revision History

No	Date	Details	Approved

R&K		株式会社 アルアンドケー	
三 角 法	縮尺 SCALE	単位 UNIT	作成年月日 DRAWN
		mm inch	2019/12/10
検 認 APPROVED	照 査 CHECKED	設 計 DESIGNED	作 成 DRAWN
Masahiko Suzuki	Masahiko Suzuki	Yoshikazu Sano	Yoshikazu Sano

LA1100-RS

SPECIFICATION

EK-20-1408-X-00