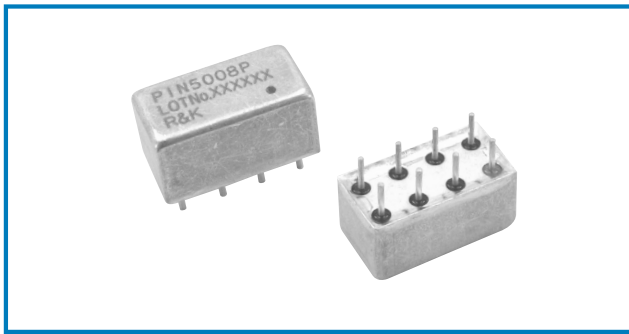


# PIN DIODE ATTENUATOR



## R&K-PIN500



- Frequency : 5MHz-500MHz
- Low-Loss High Attenuation Ratio
- Low Cost / 8PIN Package
- RoHS Compliance

### SPECIFICATIONS

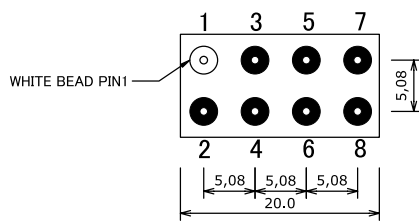
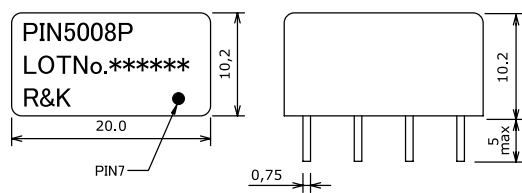
Frequency Range : 5-500MHz  
 Insertion Loss : 3dB (max.)  
 Attenuation (RF:10mW)

	5 - 50MHz	50 - 200MHz	200 - 500MHz
Typ.	40dB	30dB	25dB

VSWR : 1.3:1(max.) On Time  
 Impedance : 50 Ω  
 Maximum RF Input Power : 100mW (max.)  
 Control Voltage : 0 to +12V  
 DC Power Supply Input : +12V ±1% Regulated  
 Operating Temperature : -30°C to +65°C  
 Storage Temperature : -40°C to +100°C

### OUTLINE DRAWING

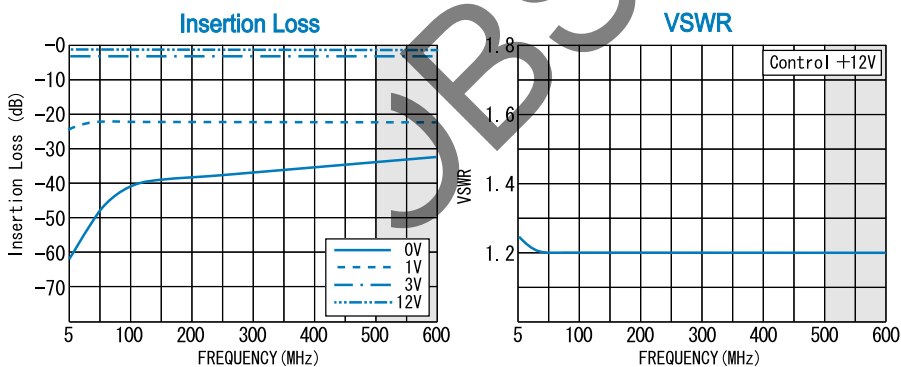
※IN MILLIMETERS



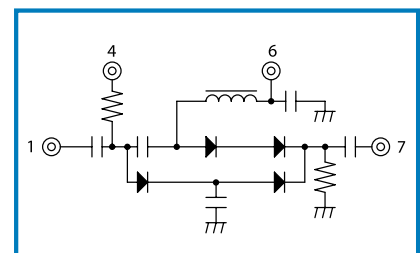
### HOW TO ORDER

Model Name  
**R&K-PIN5008P** 8P=8PIN Package

### TYPICAL PERFORMANCE (Temp @+25°C)



### SCHEMATIC



Function	Pin No.
IN/OUT	1
OUT/IN	7
+12V	4
Cont V	6
GND	2, 3, 5, 8

R&K reserves the right to make changes in the specifications of or discontinue products at any time without notice. R&K products shall not be used for or in connection with equipment that requires an extremely high level of reliability and safety such as aerospace uses or medical life support equipment. Further, R&K cannot export products to any country for use in military or defense applications.

## R&K Company Limited

721-1 Maeda, Fuji-City, Shizuoka-Pref. 416-8577 Japan  
 Tel : +81-545-31-2600 E-mail : info@rk.co.jp  
 Fax : +81-545-31-1600 URL : http://rk-microwave.com