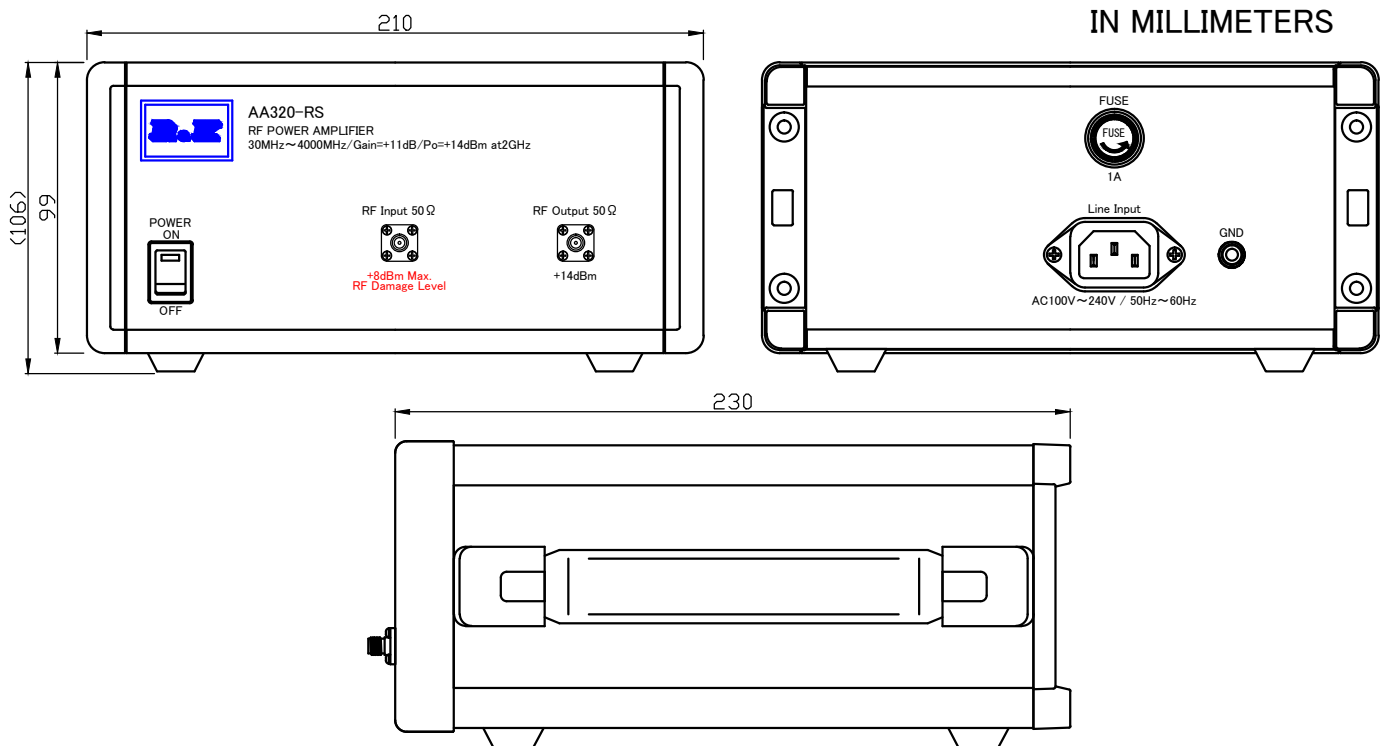


# MODEL ; R&K-AA320-RS

## SPECIFICATIONS

Frequency Range	; 30 – 4000MHz
Small Signal Gain	; +12dB (typ.) @2GHz ; +11dB (min.)
Gain Flatness	; ± 1.0dB (max.)
Output Power@1dB Comp.	; +14dBm (min.) @2GHz
Output I.C.P.	; +25dBm (typ.) @2GHz
Noise Figure	; 7.0dB (max.)
Impedance	; 50 Ω
Input VSWR	; 1.8 : 1 (typ.)
Output VSWR	; 1.5 : 1 (typ.)
AC Supply Input	; AC100~240V / 50~60Hz ; 20VA (max.)
Maximum RF Input Power	; +8dBm
Operating Temperature	; -15°C to +45°C
Storage Temperature	; -15°C to +65°C
Connectors (In/Out)	; SMA-FEMALE
Weight	; 3.0kg (max.)

## OUTLINE DRAWING



NOTE ; Specifications subject to change without notice.

2014/5/22 Spec. Change  
2018/10/16 Spec. Change

		株式会社	
		アールアンドケー	
三角法	縮尺 SCALE	単位 UNIT	作成年月日 DRAWN
	mm inch		2009/11/04
検認 APPROVED	照査 CHECKED	設計 DESIGNED	作成 DRAWN
Masahiko Suzuki	Tomotaka	Masahiko Suzuki	Masahiko Suzuki

AA320-RS

SPECIFICATION

EK-20-0232-3-01