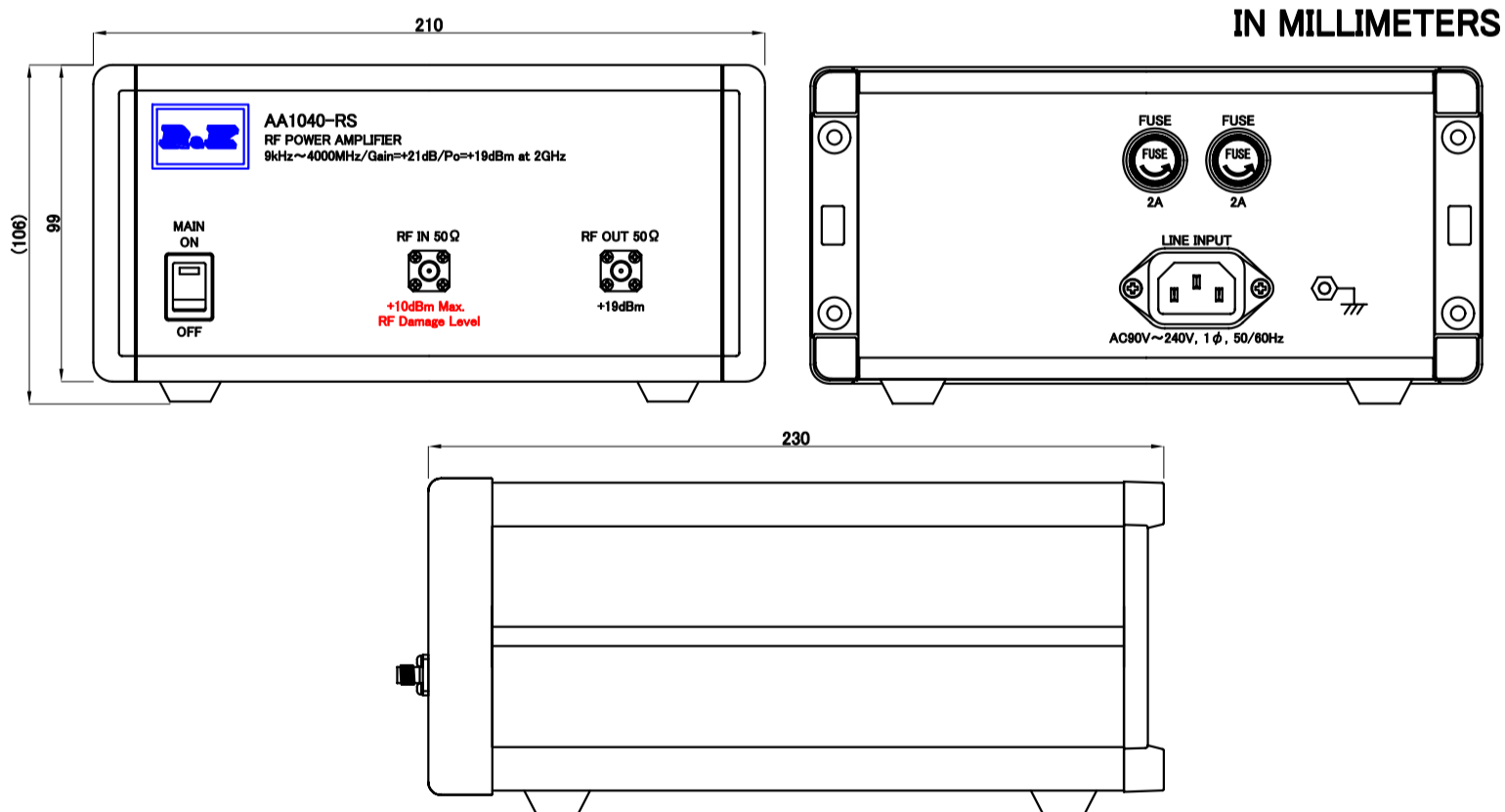


SMALL SIGNAL AMPLIFIER MODEL : R&K-AA1040-RS

SPECIFICATIONS

| | |
|--|--|
| Frequency Range | : 9kHz ~ 4000MHz |
| Small Signal Gain | : +23dB (typ.) @2GHz : +21dB (min.) |
| Gain Flatness | : ±1.5dB (max.) |
| Output Power@1dB Comp. | : +19dBm (min.) @2GHz |
| Output I.C.P. | : +29dBm (typ.) @2GHz |
| Noise Figure | : 9.5dB (max.) |
| NOTE: N.F.value is only guaranteed in the range of 10MHz-4000MHz | |
| Impedance | : 50 Ω |
| Input Return Loss | : 10dB(typ.) |
| Output Return Loss | : 10dB(typ.) |
| AC Supply Input | : AC90~240V / 50~60Hz : 20VA (max.) |
| Maximum RF Input Power | : +10dBm |
| Operating Temperature | : -15°C to +45°C |
| Storage Temperature | : -15°C to +65°C |
| Connectors (In/Out) | : SMA-FEMALE |
| Weight | : 3.0kg (max.) |

OUTLINE DRAWING



NOTE ; Specifications subject to change without notice.

Revision History

| No | Date | Details | Approved |
|----|------|---------|----------|
| | | | |
| | | | |



株式会社
アールアンドケー

AA1040-RS

| | |
|-------------|------------|
| 縮尺 SCALE | 単位 UNIT |
| mm | inch |

作成年月日
DRAWN

SPECIFICATION

検認
APPROVED

照査
CHECKED

設計
DESIGNED

作成
DRAWN

Masahiko
Suzuki

Masahiko
Suzuki

Yoshikazu
Sano

Yoshikazu
Sano

EK-20-1343-1-00

1

2

3

4

5