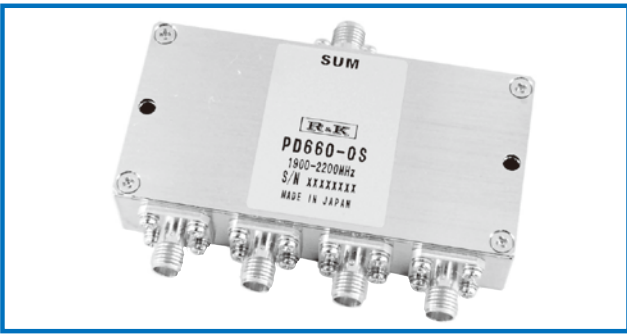
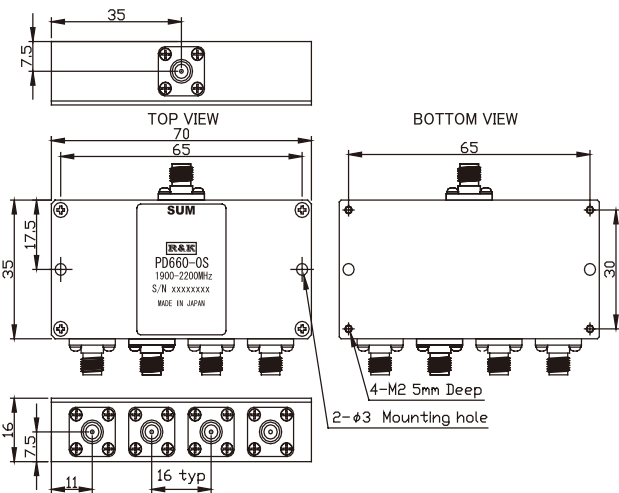


## R&K-PD660-0S



### OUTLINE DRAWING

※IN MILLIMETERS



- Frequency Range : 1900MHz ~ 2200MHz
- 4way-0°
- Wilkinson Type
- Low Cost
- RoHS Compliance

### SPECIFICATIONS @ +25°C

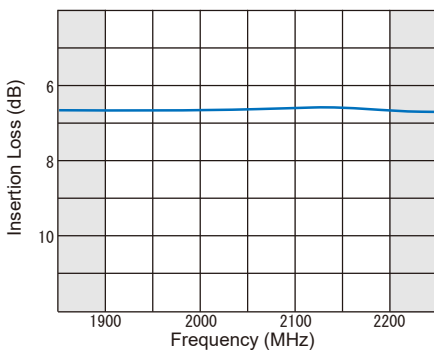
Frequency Range	: 1900MHz ~ 2200MHz	
Insertion Loss	: 1.0dB (max.)	
(Except Theoretical Loss 6.0dB)		Δ 1
Amplitude Balance	: 0.2dB (max.)	
Isolation	: 20.0dB (min.)	
Phase Balance	: 2° (max.)	
Phase Difference	: 0°	
Between Output Ports		
VSWR (SUM)	: 1.3:1 (max.)	
VSWR (Other)	: 1.3:1 (max.)	
Impedance	: 50 Ω	
Maximum RF Input Power	: 1W (1.2:1 Load VSWR)	
Operating Temperature	: -40°C to +85°C	
Storage Temperature	: -40°C to +100°C	
Connectors	: SMA-FEMALE	
Weight	: 85g (typ.)	

### HOW TO ORDER

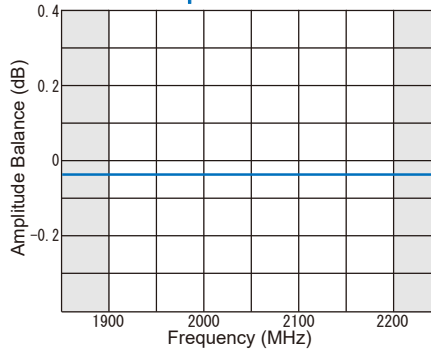
Model Name  
R&K-PD660-0S No Option

### TYPICAL PERFORMANCE (Temp @+25°C)

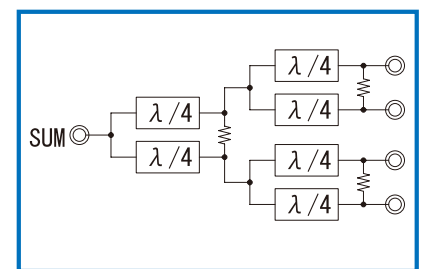
Insertion Loss (6dB theoretical Loss included)



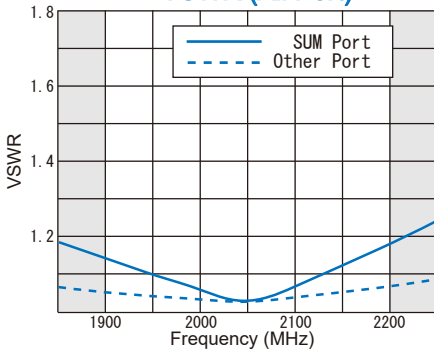
Amplitude Balance



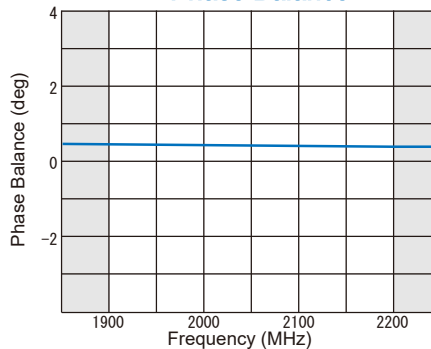
SCHEMATIC



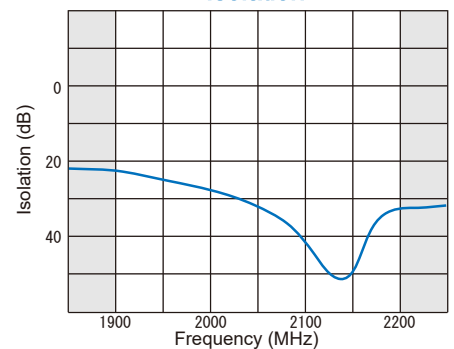
VSWR (All Port)



Phase Balance



Isolation



\* CHANGE Δ 1 28/NOV/2024

R&K reserves the right to make changes in the specifications of or discontinue products at any time without notice. R&K products shall not be used for or in connection with equipment that requires an extremely high level of reliability and safety such as aerospace uses or medical life support equipment. Further, the export of R&K products from Japan may be subject to an export license by the government of Japan, based on Japan's "Foreign Exchange and Foreign Trade Law".

## R&K Company Limited

721-1 Maeda, Fuji-City, Shizuoka-Pref. 416-8577 Japan  
Tel : +81-545-31-2600 E-mail : info@rkco.jp  
Fax : +81-545-31-1600 URL : http://rk-microwave.com