

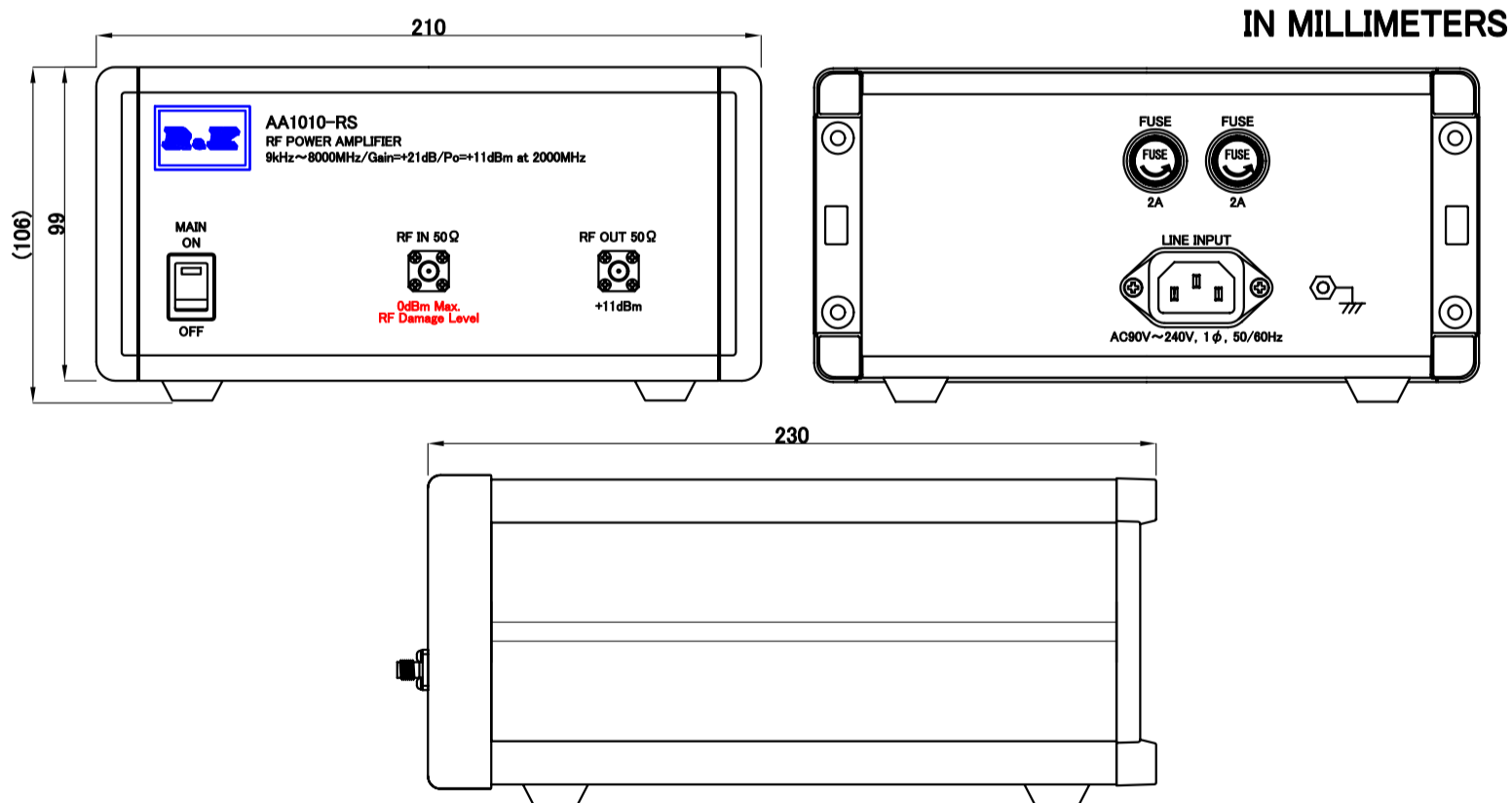
SMALL SIGNAL AMPLIFIER

MODEL : R&K-AA1010-RS

SPECIFICATIONS

Frequency Range	: 9kHz ~ 8000MHz
Small Signal Gain	: +24dB (typ.) @2GHz : +21dB (min.)
Gain Flatness	: ±2dB (max.)
Output Power@1dB Comp.	: +11dBm (min.) @2GHz
Output I.C.P.	: +24dBm (typ.) @2GHz
Noise Figure	: 10dB (max.)
NOTE: N.F.value is only guaranteed in the range of 10MHz~8000MHz.	
Impedance	: 50 Ω
Input Return Loss	: 10dB (typ.)
Output Return Loss	: 10dB (typ.)
AC Supply Input	: AC90~240V / 50~60Hz : 10VA (max.)
Maximum RF Input Power	: 0dBm
Operating Temperature	: -15°C to +45°C
Storage Temperature	: -15°C to +65°C
Connectors (In/Out)	: SMA-FEMALE
Weight	: 3.0kg (max.)

OUTLINE DRAWING



NOTE : Specifications subject to change without notice.

Revision History

No	Date	Details	Approved



株式会社
アールアンドケー

AA1010-RS

縮尺 SCALE	単位 UNIT
mm	inch

作成年月日
DRAWN

SPECIFICATION

検認
APPROVED

照査
CHECKED

設計
DESIGNED

作成
DRAWN

Masahiko
Suzuki

Masahiko
Suzuki

Yoshikazu

Yoshikazu

EK-20-1530-X-00